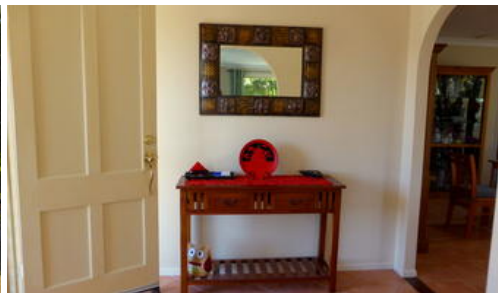




**13 Linthaven Dr, Rothwell**



## SPACIOUS FAMILY HOME WITH EXTRAS

Come and inspect this quality family home on a lovely 798 M2 block. The vendors are downsizing and now is the opportunity to buy an immaculate home in a great location - close to private & public schools, childcare centres, shops, bus & train transport. Five minutes drive to the Bruce Hwy for commuters and North Lakes shopping centre and a short walk to kilometres of bushland and waterfront walkways.

- \* Lowset brick & colourbond home with solar power
- \* Double carport with high top roof to suit caravan or boat
- \* Side access to a powered three bay colourbond shed - 2 car accommodation and workshop
- \* Open plan living areas with air conditioning
- \* Formal lounge and dining
- \* Casual dining and family room
- \* Light & airy kitchen with picture window overlooking the entertainment area and yard, ceramic cooktop, rangehood, dishwasher and pantry
- \* Air conditioned rumpus
- \* Four bedrooms with built in robes

4 2 4

<b>Price</b>	SOLD for \$500,000
<b>Property Type</b>	residential
<b>Property ID</b>	1228
<b>Land Area</b>	798 m2

### Agent Details

Jan Jones - 0439 758 867

### Office Details

Clontarf  
48 Hornibrook Esplanade Clontarf QLD  
4019 Australia  
07 3283 6737



The above information provided has been furnished to us by the vendor/s. We have not verified whether or not that information is accurate and do not have any belief in one way or the other in its accuracy. We do not accept any responsibility to any person for its accuracy and do no more than pass it on. All interested parties should make and rely upon their own inquiries in order to determine whether or not this information is in fact accurate.