

Sold



Unit 11, 25-27 Georgina St, Woody Point



## 3 LEVEL TOWNHOUSE- WALK TO THE BEACH !

East of Oxley Ave Woody Point is this very spacious 3 story Townhouse available for sale in a great complex that is only minutes to the beach, Woody Point Village shops, café's and the popular Belvedere Hotel and popular playground and park areas right on the waterfront.

If you are looking to enjoy the Peninsula lifestyle with space this townhouse will be right for you!

This high ceiling will surprise you in this 3-bedroom townhouse that has so much to offer with 3 large bedrooms with their very own private ensuites for each room with one being on the ground level with direct access out to your very own courtyard. (Perfect for teens or extra guests)

The living area comes complete with a combined, dining area and modern kitchen with a laundry and powder room for extra

3 3 1

153 m<sup>2</sup>

**Price** SOLD for  
\$600,000

**Property Type** Residential

**Property ID** 2055

**Land Area** 153 m<sup>2</sup>

**Floor Area** 128 m<sup>2</sup>

### Agent Details

Leisa Lowe - 0438 801 298

### Office Details

Clontarf

48 Hornibrook Esplanade

Clontarf QLD 4019 Australia

07 3283 6737

convivence.

Off this living area is a lovely balcony to sit and relax and enjoy that glass of wine at the end of the day.



Some of the many features are:

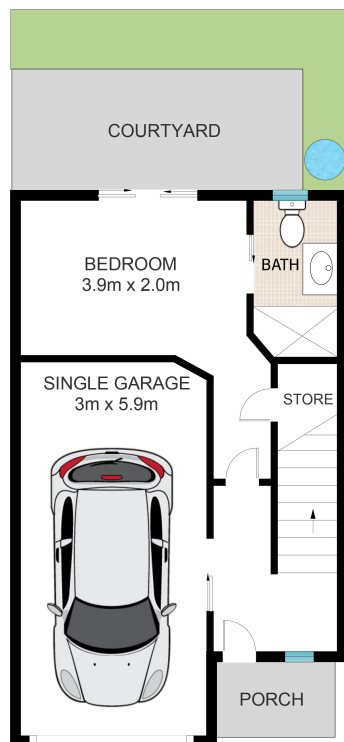
- Open plan kitchen, dining and living area
- Split system air-conditioning & ceiling fans
- Low maintenance garden/courtyard
- Plank flooring on the living area
- Lovely balcony off the living and dining area capturing bay breezes
- 3 Large bedrooms with 3 en-suites (one on the ground floor, 2 on the top floor)
- Pet friendly complex upon approval
- Single lock up remote garage with storage area
- Close to all amenities and only 25 minutes' drive to the Airport and 35 minutes' drive to Brisbane City.

Body Corporate fees are approximately \$2700 per year making this very affordable at aprox \$52 per week.

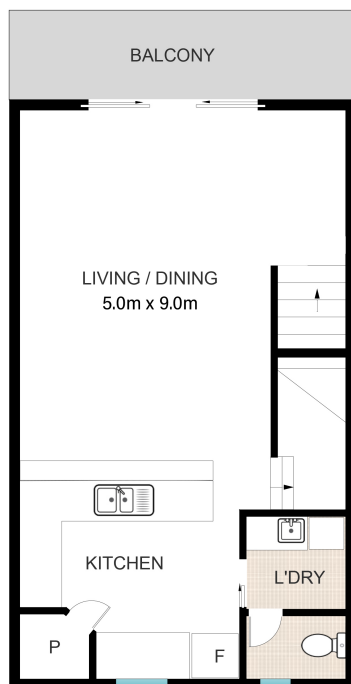
Contact Leisa Lowe from Jan Jones Real Estate today to organise your inspection.

All information contained herein is gathered from sources we believe to be reliable. However, we cannot guarantee its accuracy and interested persons should rely on their own enquiries.

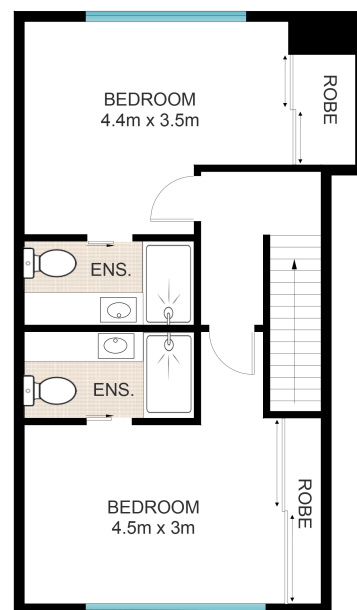
*The above information provided has been furnished to us by the vendor/s. We have not verified whether or not that information is accurate and do not have any belief in one way or the other in its accuracy. We do not accept any responsibility to any person for its accuracy and do no more than pass it on. All interested parties should make and rely upon their own inquiries in order to determine whether or not this information is in fact accurate.*



ENTRY LEVEL



FIRST LEVEL



SECOND LEVEL

This floor plan is for illustrative purposes only. Whilst every attempt has been made to ensure the accuracy of this floor plan, all measurements are approximate only. No responsibility is taken for any errors, omission or miss-statement. Potential purchasers should make their own enquiries as to the accuracy of this floor plan.

11/25 Geogina St, Woody Point

