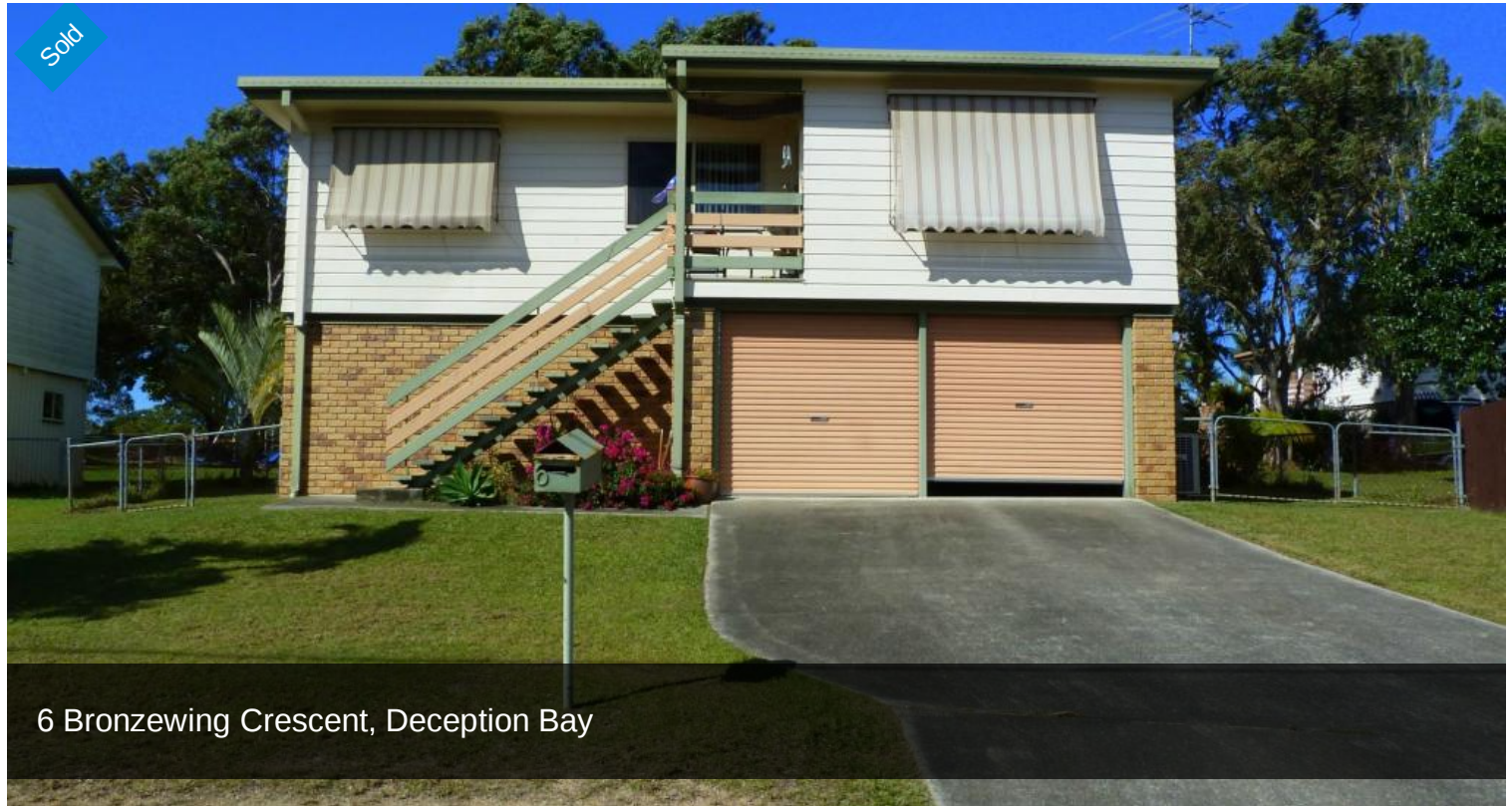


Sold



6 Bronzewing Crescent, Deception Bay



LARGE BLOCK - PARKLAND ASPECT

You can't go past this home for value - well maintained and sitting on a lovely 863m2 block overlooking a sports field and parkland. The home has a brick base, hardiplank upper level and an iron roof. There is good side access at both sides of the home and plenty of room in the backyard for a shed.

There are three bedrooms - the master has a built in robe. The open plan living area has an air conditioned lounge and a fan in the dining area. The kitchen has an electric stove with a ceramic cooktop and looks out over the big backyard and beyond to the park. There is a family bathroom and a separate toilet.

Downstairs is a double garage and laundry facilities. The home has ceiling insulation.

Located close by is bus transport and a local shopping centre with grocery store, medical centre and pharmacy. The Bruce Highway is five minutes away for commuters travelling north

3 bedrooms 1 bathroom 2 car spaces

863 m2

Price SOLD for
\$285,000

Property Type Residential

Property ID 320

Land Area 863 m2

Agent Details

Jan Jones - 0439 758 867

Office Details

Clontarf

48 Hornibrook Esplanade
Clontarf QLD 4019 Australia
07 3283 6737

and south.



Owner Downsizing - Home Waiting For A Family

The above information provided has been furnished to us by the vendor/s. We have not verified whether or not that information is accurate and do not have any belief in one way or the other in its accuracy. We do not accept any responsibility to any person for its accuracy and do no more than pass it on. All interested parties should make and rely upon their own inquiries in order to determine whether or not this information is in fact accurate.