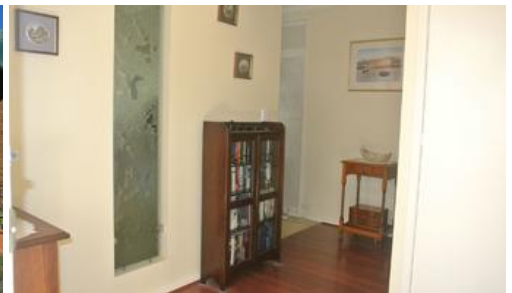




**25 Renita Street, Aspley**



## LARGE FAMILY HOME - EX MATER

This lovely low set brick and tile is set nicely back on it's 741 sq mtrs block. Beautifully private and very well presented, this home with an elegant touch of Old World Charm is ready to go. My sellers are downsizing and have spent many happy years in this wonderful family home. High on the hill to catch the breezes, this home also boasts;-

- \* Lovely private secure entry,
- \* Ducted air conditioning throughout
- \* Very large lounge with carpeted floors
- \* New gourmet kitchen with plenty of cupboards, inland bench and gas cook top
- \* Separate dining through french doors with access to the entertaining area.
- \* Main bedroom is large with attached dressing room with wall of built in robes, overhead fan and carpeted floors. All Bedrooms have been freshly painted throughout.
- \* Second bedroom is king sized with built in robes, carpeted floors overhead fan
- \* Third bedroom is also king sized with built in robes, carpeted floors and overhead fan.
- \* Large family bathroom with double shower and bath
- \* Separate toilet
- \* There is a large room which is currently being used as a Second living room has tiled floors, overhead fan and separate access., This room can easily be used as a 4th

4 2 2

<b>Price</b>	SOLD for \$580,000
<b>Property Type</b>	residential
<b>Property ID</b>	469
<b>Land Area</b>	741 m2

### Agent Details

Heather Murray - 0450 104 181

### Office Details

Clontarf  
48 Hornibrook Esplanade Clontarf QLD  
4019 Australia  
07 3283 6737



The above information provided has been furnished to us by the vendor/s. We have not verified whether or not that information is accurate and do not have any belief in one way or the other in its accuracy. We do not accept any responsibility to any person for its accuracy and do no more than pass it on. All interested parties should make and rely upon their own inquiries in order to determine whether or not this information is in fact accurate.